

RESIDENTIAL - COMMERCIAL
EDUCATIONAL - GOVERNMENTAL
INDUSTRIAL - TRANSPORTATION
HEALTHCARE - COMMUNITY
RESEARCH/DEVELOPMENT



926 The East Mall, Suite 301,
Toronto,
ON. Canada, M9B 6K1

Tel: + 1 (416) 900-8670
+ 1 (647) 907-8550
+ 1 (647) 932-8500



DESIGN - SITE SUPERVISION- PROJECT MANAGEMENT
CONSULTATION - PEER REVIEW

www.canconsultinghansa.com



CAN CONSULTING HANSA

CAN CONSULTING HANSA. INC. (CCH) is a Canadian company, founded in Toronto and expanding the structural engineering services in Egypt and KSA.

High standards of ethics and technical excellence are the firm's hallmark. Our solutions are tailored for each project, keeping the client's interest at heart, and ensuring that the client's investment is protected. We have been working with architects, construction companies and consulting offices in Canada and worldwide. Our innovative Engineers balance consummate engineering principles with inspired design and have the expertise and enthusiasm to bring your project to a successful completion within your budget and schedule.

The projects in this brochure include two types of projects, one of which has been carried out completely by CCH team. The second type has been provided under the name of other offices with the participation of CCH members.

STRUCTURAL DESIGN

Our projects include: **Residential, Commercial, Educational, Governmental, industrial, Transportation, Healthcare and Community Buildings.**

SITE SUPERVISION

We carry out site visits and follow up on our design based on our clients request to assure adherence with the design.

PROJECT MANAGEMENT

We follow and advise the project/construction team and plan the activities to assure successful completion of the project.

TEAM

Dr. Hossam Saleh, Dr.-Eng., Dipl. BSc., P. Eng., President

Dr. Saleh has over 20 years of experience in design and consulting in the area of structural design, teaching, research, in Canada, Germany, Dubai and Egypt. He is experienced in steel, concrete; including pre-stressed and pre-cast concrete structures, concrete technology and has participated in different research topics such as; walls of high strength concrete, fiber reinforced concrete and precast concrete columns. Dr. Saleh has worked with worldwide renowned consulting offices. Dr. Saleh is the founder of **CAN CONSULTING HANSA. INC.** in Toronto and Middle East.

A group of talented and enthusiastic engineers in our offices are providing great services.

LOCATIONS :

Canada: 926 The East Mall, Toronto, Canada

Egypt: 5th Settlement, New Cairo,

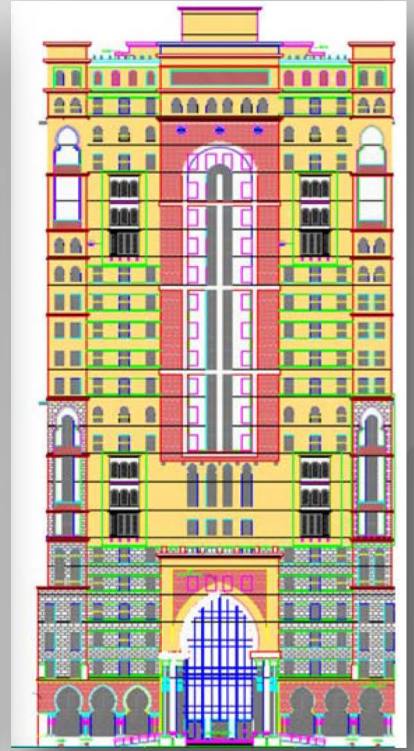
Saudi Arabia: P.O.BOX 92067, Riyadh

Tel: (+1) 6479328500 / 6479078550

Tel: (+2) 1004916375

Tel: (+966) 541990893

COMMERCIAL



**45 Story Office Building,
New York,(\$1200M)**

**58 Story Office Building,
Calgary, Canada**

**53 Story Office Building,
Toronto, Canada
(Structural Engineer,HY)**

Hotel America, Dubai, UAE

**Office Building by Daman,
Dubai UAE
(S.Structural Engineer,BH)**

**Hotel Burj Makkah,KSA
22 Story Building,
(CAN CONSULTING HANSA is
carrying out peer review)**

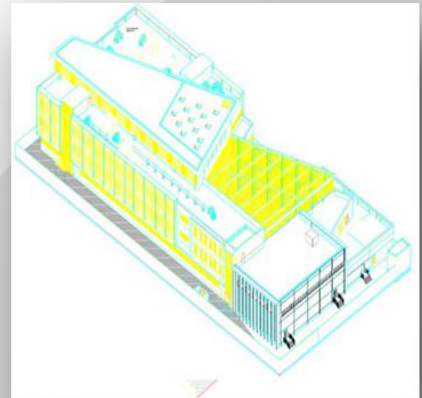


EDUCATIONAL

Al Faisal University, Riyadh, KSA, (\$ 150M)
The institutional buildings include two
basements as underground parking and
four levels above the ground floor.
(Concrete Structure)
(S. Structural Engineer, BH)



Engineering service to support the
construction and design of different
Schools in Greater Toronto Area.



Structural design and review of different
school types to be constructed in many
locations across the Kingdom of Saudi Arabia
(peer review)

HEALTHCARE



**Women's College Hospital, Toronto, ON
Retrofit and Tenant Improvement
Project, renovation of commercial
office building for women's College
Hospital, creating new clinics and office
space. Targeting LEED Silver, 120,000sf,
\$24M (Consultant/Project Engineer, NORR)**

**Design of labs and medical center at
The Faculty of Medicine within Al Faisal
University, Riyadh, Saudi Arabia
(S.Structural Engineer BH)**



COMMUNITY CENTERS

**Emergency and Training Center,
Mosinee, ON. Structural Steel
Building with trusses made of build
up cold rolled steel members**



**Church in Toronto, ON, design, details,
site visits, and reports to clients and
the City Of Toronto**

**Mosque design in Dubai,
(S, Structural engineer BH)**



GOVERNMENTAL

South West Detention Center, winning the P3 competition, design and supervision of the building including: Steel, Concrete, and Pre-cast Concrete Units, Design Presentation and coordination, Post Contract Services, Field and Shop drawings review (Consultant/ Project Engineer, NORR)



Thunder Bay Regional Consolidated Courthouse Competition, Thunder Bay, ON, winner of best technical submission.

TRANSPORTATION & AVIATION

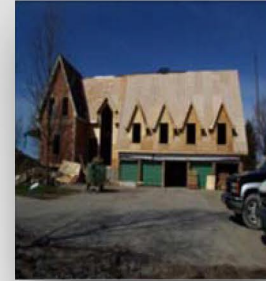


Design of Parking Garages, Mississauga, ON. Six story parking garage, pre-cast and cast in place concrete, structural steel Station with Retail Area, and Basement. (Consultant/Project Engineer, NORR).

skydiving Simulator for private club in Nad Al Shbea, Dubai, UAE. Structural design and project management. (Project Manager and Structural Leader, BH)

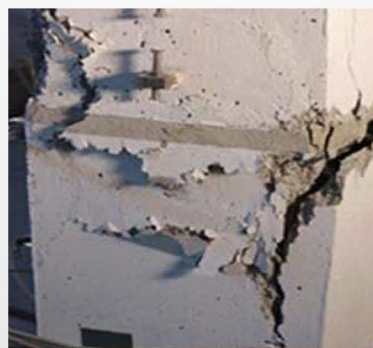


CONDOMINIUM/RESIDENTIAL



Different type of residential projects such as family houses and farm houses in Ontario, residential villas in the Middle East, and high rise mixed use in Dubai.

RESEARCH/DEVELOPMENT



Innovate and active in serving the community in different areas.

Connections of precast concrete members.

Pre-stressed and post tensioned concrete.

Providing different seminars for the engineering community.